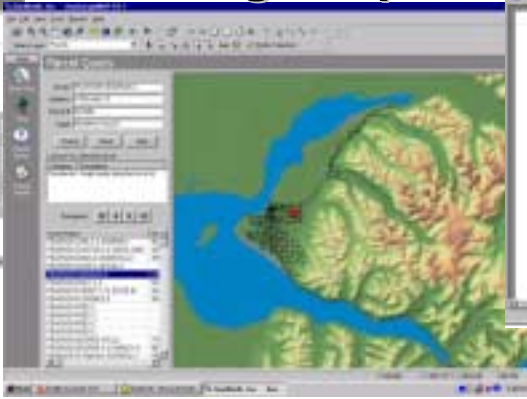
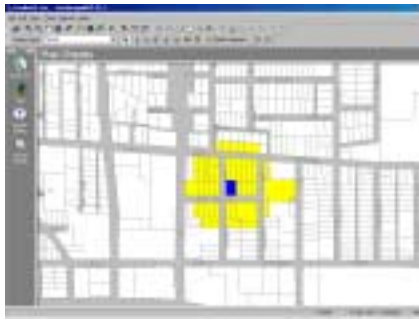


AnchorageMap 3.0™



Basic Map Viewing Functions

- Print a map with map title and current map display view
- Zoom In
- Zoom Out
- Pan
- Zoom to Map Extent
- Zoom to Selected Feature

Map and Data Information Functions

- Map Tips - Allows layer feature information to be displayed when cursor is placed over a feature
- Identify a Feature - Allows many feature items to be displayed when a layer feature is selected
- GeoSearch - Produces a list of selected polygon data items from all layers found at the selection point (Only selects polygon features. Roads, Railways, Streams, and etc. will not become selected)
- Clear Selection - Clears features selected from memory

Feature Selection Functions

- Select by Pointing - Selects a feature from a predetermined layer by point and click.
- Select a Circle - Selects features within a user defined circle. Diameter is adjustable.
- Select by Point - Used to select a polygon by marking a point anywhere in the polygon.
- Select by Line - Used to select feature by intersection with a user drawn line.
- Select by Rectangle - Used to select features by drawing a user defined box or rectangle around a feature.
- Select by Polygon - Allows the user to select a feature contained within a user defined irregular shape.
- Buffer Selection - Allows the user to select features within a buffer using buffer target layer and a distance (Buffer features can be dynamically added or deleted by the user)

Cartographic Functions

- Measure Length - Allows the user to draw a line or series of lines and return the total map distance represented
- Measure Area - Allows the user to draw a polygon on the map and return the total sq. ft. of the area drawn.

Note: Text and shapes can be added with the graphics functions of AnchorageMap.

Graphics Functions

- Add a point, line, rectangle, circle (no ovals), polygon
- Add text (straight or curved)
- Adjust the border and fill colors for each graphic
- Graphics can not be resized
- Graphics can be sent to the front or rear of the stacking order
- Graphics can be cut, selected and unselected

Program Control Functions

Display Editor

- Set layer minimum and maximum display characteristics
- Adjust or edit layer text display - Size, angle, color, height, alignment
- Set layer minimum and maximum display characteristics
- Set display styles, single symbol - Unique value, class breaks, text labels, dot density, pie or bar charts, Image Catalog function (does not work)

Preferences

Graphic Selection:

- Set search distance for point, polygon and line features
- Set flashing selected feature duration
- Set map tip search tolerance

Display:

- Set map canvas background color
- Select colors for selected, current, buffered and graphic features

Report Functions

- Property Report (CAMA data) without map
- Property profile (CAMA data) reports with map
- Map Display prints a map of the current onscreen area
- Report Viewer allows viewing of current or saved reports
- Mailing Label Wizard creates mailing labels of owners of selected parcels. Can be printed or exported.
- Map display can be copied to the Windows clipboard and then pasted into other applications such as Microsoft Word or PowerPoint

Query Function

- Query Builder - Used to build custom queries of layers
- Parcel Query - By owner, address, parcel number, or legal description
- Parcel details - View CAMA data on a selected parcel
- View database of selected parcels

Layer Control Functions

- Select layers to display
- Add new layers to available layers
- Remove layers from available layers
- Adjust Layer Properties (see Program Control Functions, Display Editor above)

System Requirements

- Windows 9x/NT/2000/ME/XP
- 200 Mhz processor or greater
- 64 MB RAM minimum; 132 MB recommended
- Display supporting 256+ colors and 800 x 600 resolution
- CD ROM Drive
- 80 MB available disk space



GeoNorth LLC
P.O. Box 111586
Anchorage, AK 99511-1586
(907)677-1500